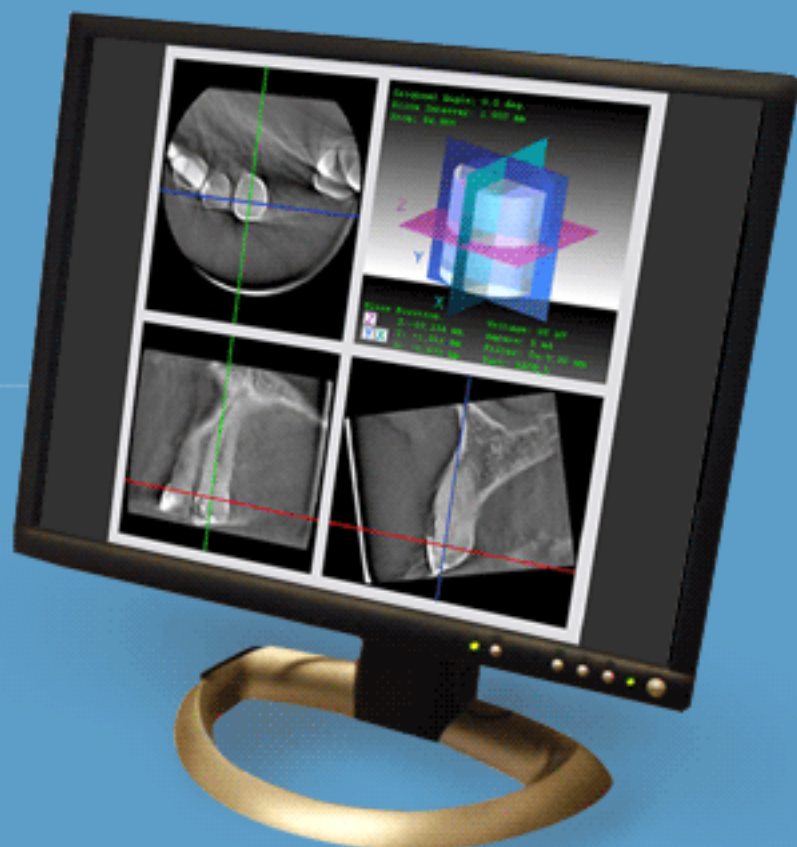


Clayray X-ray Services Pty Ltd

Specialists in dental imaging

Dento-Facial Radiographic Imaging



Inside:

* Too good to be true?

Is it possible to have both the lowest radiation dose and the highest resolution currently available? Absolutely!

* Cone beam image samples

* OPG & Ceph image samples

OPG | PA & Lat Ceph | Intra-oral films | Cone Beam CT

Clayray is a well-established Melbourne based dental imaging practice. Standing at the forefront of current technological developments, we not only offer the sharpest and best images possible, but a range of other additional benefits both to you as a referrer and to your patients. Conveniently located in Melbourne's CBD, we offer fast efficient and reliable service. State of the art technology ensures image quality not previously possible. Your patients will also be relieved to know that the radiation dose is considerably lower than with other technology. Most importantly, they provide images that allow a more accurate diagnosis to be made.

Are you getting the best diagnostic images for your patients?

One way we can help you save & reduce significant risk



Volumetric scan capability

Our Cone Beam machine takes a volumetric scan of the selected area and generates images in 3 planes as shown below. Free viewer software allows you to adjust the viewing planes and see each image change in real time. This gives you more control, also giving you a more accurate and complete representation.

Before you buy ...

Dentists are now being encouraged to install their own extra-oral panoramic and cone beam imaging systems. Before you buy, why not first try our services? There is no risk or expense to be borne by you, and we're confident you will be completely satisfied with our service. Same day service available in many cases.

fast & reliable service

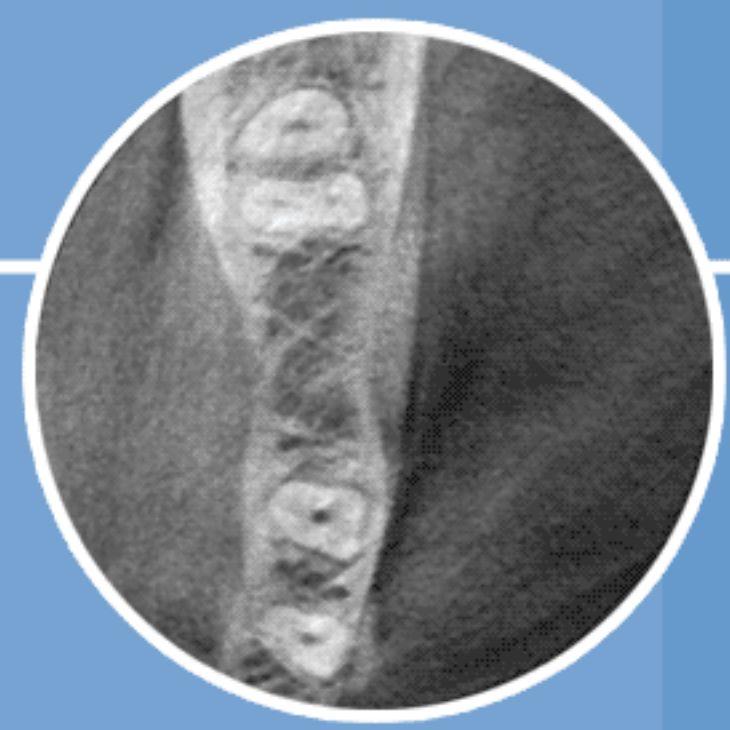
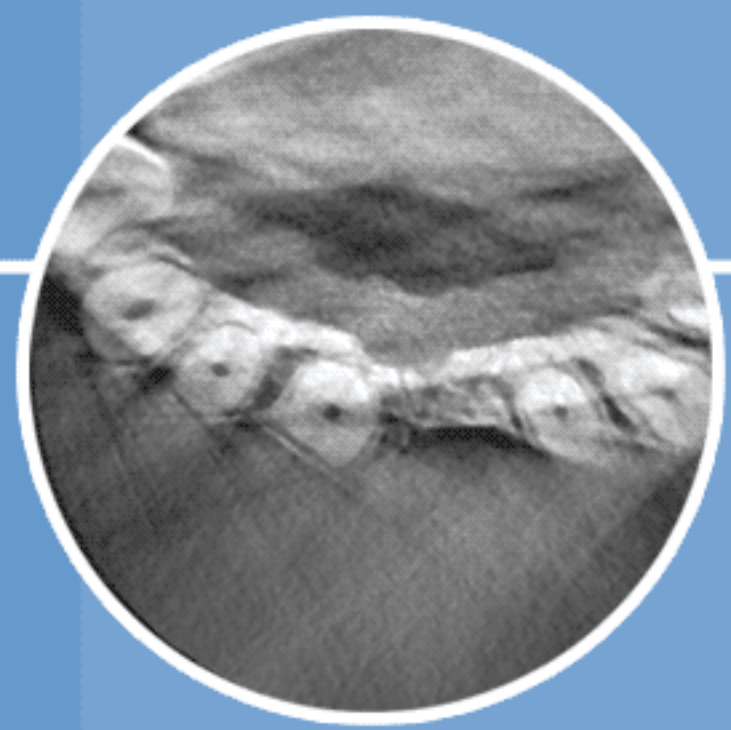
With simple examinations such as ceph and OPGs, images can be returned with the patient on the same day. In all other cases, you can be assured of prompt and reliable service. We deliver by hand to the CBD and express post complex examinations.

A world of difference

The new dental imaging technology we use offers outstanding results.

Benefits include:

- * superior image clarity and resolution
- * very low radiation dose
- * easy reprints if lost

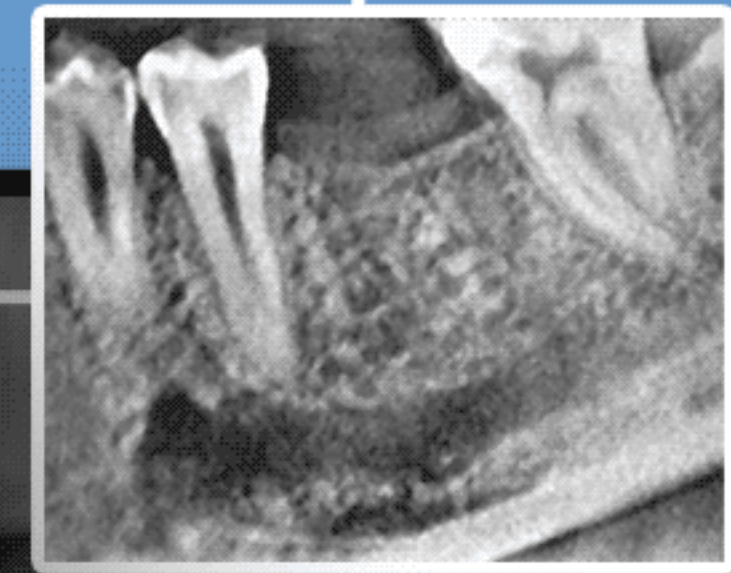
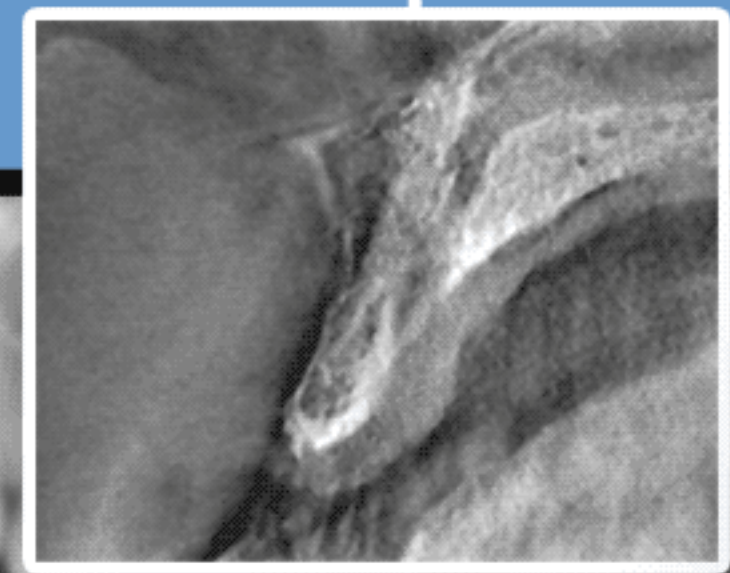
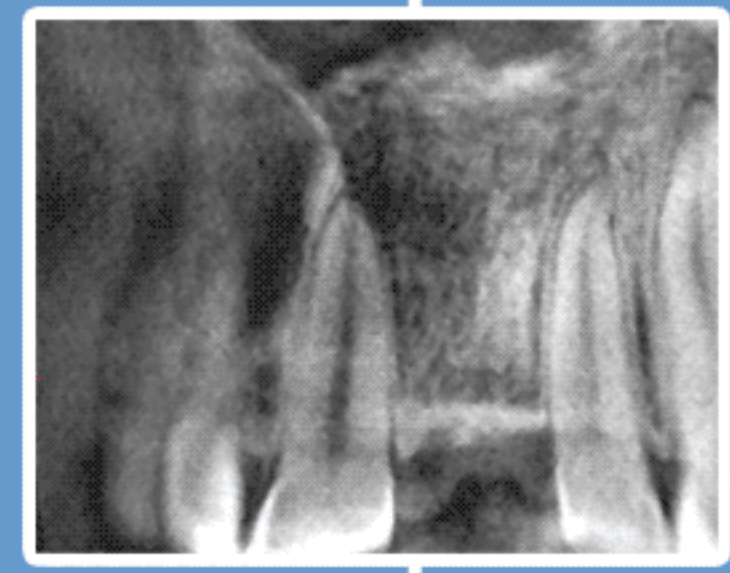


Implant planning Maxilla

Edentulous 21 site for bone volume assessment

Implant planning Mandible

Edentulous 36 site with IAN clearly visible



Our Service

As leaders in the field of dental imaging in the Greater Melbourne area, we take pride in our commitment to you, the dental professional.

Patients may present to us without an appointment for all simple examinations such as OPGs and Cephs. They can return to you with their films immediately, at no cost to either you or your patient. OPGs, cephs and limited intra-oral films are bulk billed, however, intra-oral full mouth surveys and all complex examinations are billed privately but attract a Medicare rebate, even if referred by a general dentist or orthodontist.

Cone beam examinations:

Cone beam examinations are ideal for:

- * Implant assessment
- * Impacted 3rd molars
- * Impacted canines
- * Endodontic problems
- * TMJs
- * Pathology of the jaws

Clayray X-ray Services Pty. Ltd.
1st Floor 24 Collins Street, Melbourne 3000
Telephone: 03 9650 1152
Fax: 03 9650 5356
Opening hours: Mon - Fri 8:30 am - 5 pm

Dento-Facial Radiographic Imaging

Why choose Clayray?

We are experts in the field of dental imaging. Because we are pioneers of new technology, we have a level of experience not easily matched. We are often called upon to lecture in diagnosis using cone beam techniques.

Why do you specialise?

We specialise in dental imaging because we are passionate about dental work. We love what we do, and we do it exceptionally well. This allows us to achieve a level of excellence which we could not provide if we chose to spread our efforts across a broader range of services.

How does the radiation dose compare to other techniques?

With our equipment, the radiation dose is between 4 to 14 times lower than conventional CT and full field cone beam examinations.

In what format are dental images available?

Cone beam scans are provided as an interactive viewer allowing scrolling through images in 3 planes. OPG and Cephs are provided on film and we can also provide a digital image by email or CD.

What is the cost?

There is no charge to you as a referrer. Your patients can claim a significant portion of the cost back from Medicare.

Where can I find more image samples?

The complete range of our services is shown on our website, with samples of each type of examination available. Our site address is shown at the bottom of this page.